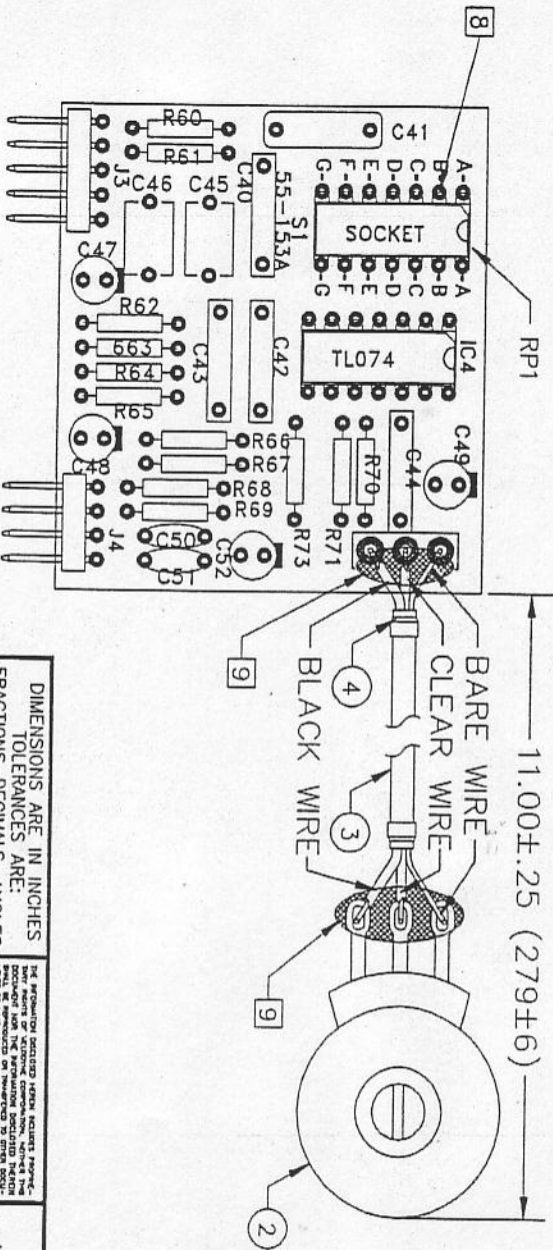


NOTES  
 1. ALL CAPACITOR VALUES IN  $\mu$ F UNLESS NOTED  
 2. ALL RESISTOR VALUES IN OHMS

NOTES: UNLESS OTHERWISE SPECIFIED

1. ALL COMPONENT LEADS MUST SHOW THROUGH SOLDER SIDE OF BOARD
2. ALL COMPONENT LEADS MUST BE TRIMMED TO .063 INCH (1.58mm) MAX
3. ALL COMPONENT LEADS MUST SHOW GOOD SOLDER FLOW ON BOTH SIDES OF BOARD. NO SOLDER VOIDS/PINHOLES
4. SOLDER MUST BE SMOOTH AND SHINY WITH EVEN WETTING NO COLD SOLDER JOINTS
5. BOTH SIDES OF BOARD MUST BE CLEAN
6. DIMENSIONS ARE IN INCHES (MILLIMETERS)
7. FOR ITEM NUMBERS SEE COMPUTER BILL OF MATERIALS
8. REMOVE PIN 2 FROM RP1
9. APPLY HOT MELT ITEM 1 TO SOLDER JOINTS
10. WIRE LEADS TO HAVE NO BIRD CAGING
11. WIRE ENDS TO BE STRIPPED AND TINNED .25±.10 INCH (6.35mm±0.13)



DWG. NO.		SH.		1	
E.C.N./REV.		DESCRIPTION		DATE	
A		RELEASE TO PRODUCTION		3/16/94	
				APPROVED	
				<i>[Signature]</i>	

DIMENSIONS ARE IN INCHES  
 FRACTIONS DECIMALS ANGLES  
 TOLERANCES ARE:  
 ± 1/16 .XXX ± .01 ± .1  
 .XXX ± .005

THE INFORMATION CONTAINED HEREIN IS UNCLASSIFIED EXCEPT WHERE SHOWN OTHERWISE AND THE INFORMATION CONTAINED HEREIN IS NOT TO BE RELEASED TO THE PUBLIC WITHOUT THE WRITTEN AUTHORIZATION OF THE OFFICE OF THE SECRETARY OF DEFENSE.

**Velocityne Acoustics Inc.**  
 COVER BOARD ASSY.  
 ULD-15/18

MATERIAL:	ULD-15/18
FINISH:	USED OH
DO NOT SCALE DRAWING	

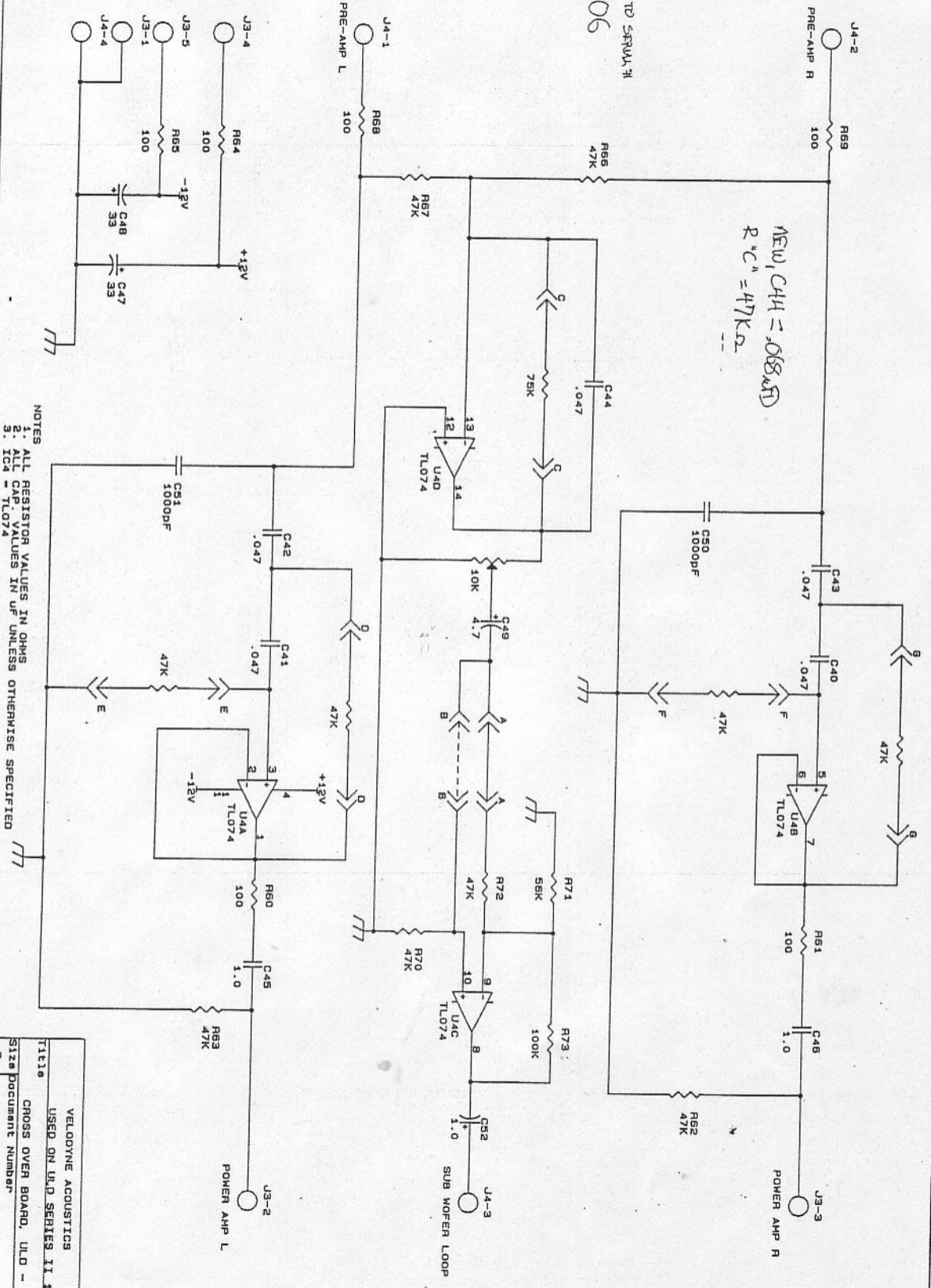
APPROVALS	DATE
DRAWN	3/16/94
CHECKED	4/1/94
Q.C.	4/12/94
ENGINEERING	4/12/94

SCALE	2-1
DWG. NO.	84-156
REV.	A

SCALE	2-1
DWG. NO.	84-156
REV.	A



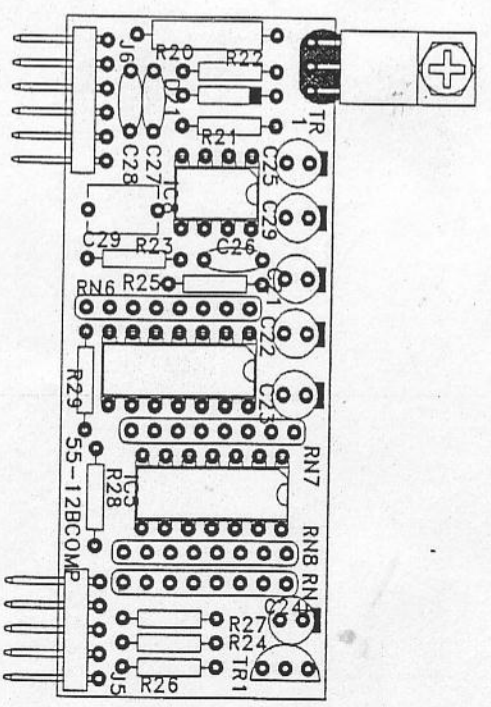
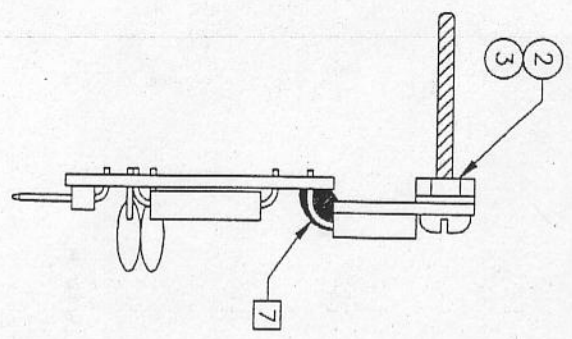
UAD, PRIOR TO SERIAL #  
51161006



- NOTES
1. ALL RESISTOR VALUES IN OHMS
  2. ALL CAP VALUES IN μF UNLESS OTHERWISE SPECIFIED
  3. ICs - TL074

VELDYNE ACOUSTICS	
USED ON UAD SERIES II 12/18	
TITLE CROSS OVER BOARD, ULD - 15/18	
Size	Document Number
B	55-153
Date:	February 18, 1991 Sheet
REV	of 1
N	1

- NOTES: UNLESS OTHERWISE SPECIFIED
1. ALL COMPONENT LEADS MUST SHOW THROUGH SOLDER SIDE OF BOARD
  2. ALL COMPONENT LEADS MUST BE TRIMMED TO .063 INCH (1.58mm) MAX
  3. ALL COMPONENT LEADS MUST SHOW GOOD SOLDER FLOW ON BOTH SIDES OF BOARD. NO SOLDER VOIDS/PINHOLES
  4. SOLDER MUST BE SMOOTH AND SHINY WITH EVEN WETTING NO COLD SOLDER JOINTS
  5. BOTH SIDES OF BOARD MUST BE CLEAN
  6. FOR ITEM NUMBERS SEE COMPUTER BILL OF MATERIALS
  7. APPLY HOT MELT ITEM 1 TO TRANSISTOR LEADS



DWG. NO.	SH.	1
REVISIONS		
E.C.N. / REV.	DESCRIPTION	DATE
A	RELEASE TO PRODUCTION	3/16/94
		APPROVED
		<i>[Signature]</i>

DIMENSIONS ARE IN INCHES  
 FRACTIONS DECIMALS ANGLES  
 $\pm 1/16$  .XXX .01  $\pm 1^\circ$   
 .XXXX .005

This drawing depicts a new product. It is not to be used for production without the approval of the design engineer. It is the responsibility of the user to verify the dimensions and tolerances of the components and materials used in the assembly.

**Velocity Acoustics Inc.**  
 COMPARATOR BOARD ASSY.  
 ULD-15/18

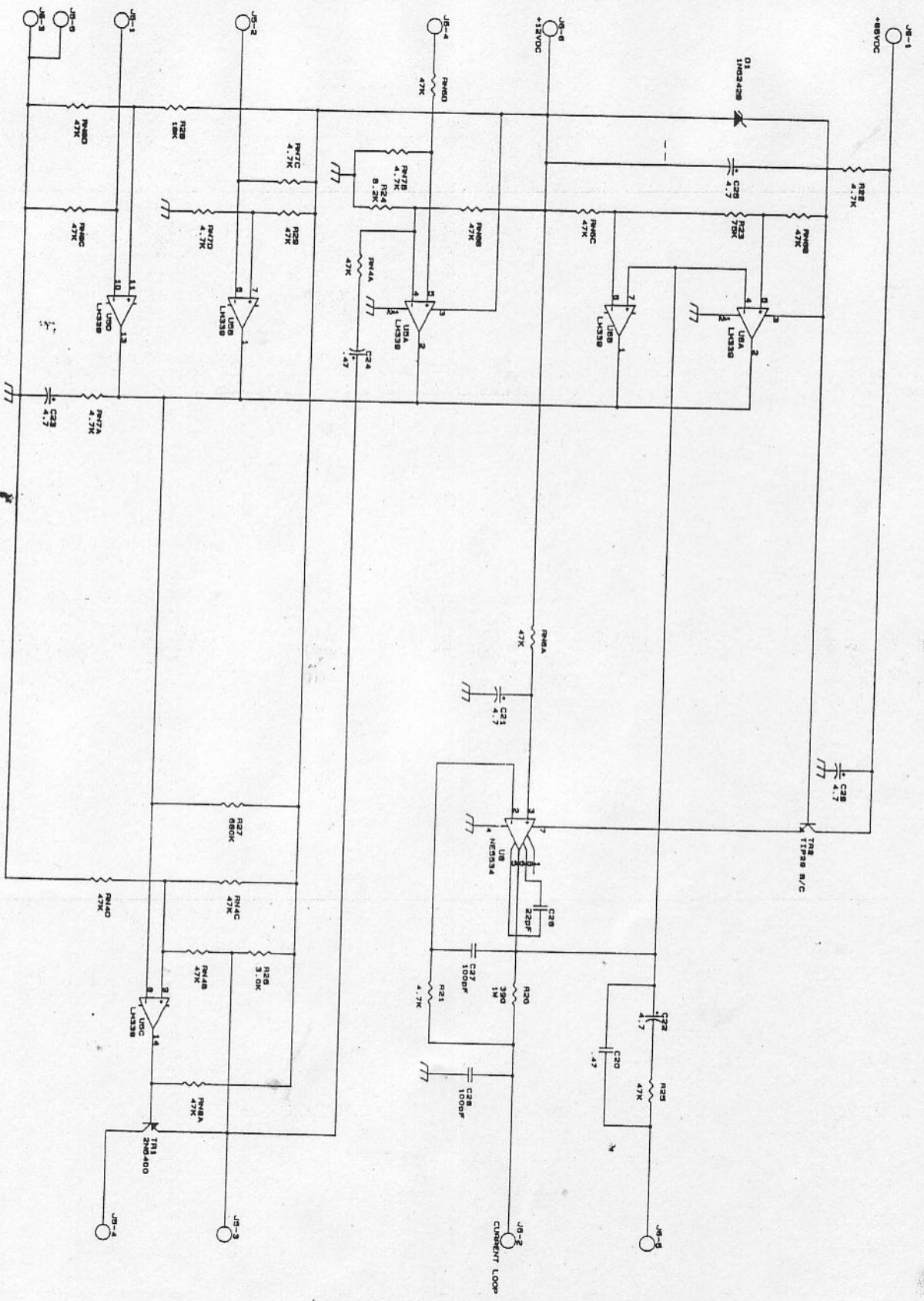
MATERIAL:	ULD-15/18
FINISH:	USED ON
DO NOT SCALE DRAWING	
APPLICATION	

APPROVALS	DATE
DRAWN: JPZ	3/16/94
CHECKED: <i>[Signature]</i>	4/12/94
DESIGNED: <i>[Signature]</i>	4/12/94

SIZE	DWG. NO.
B	84-12BCOMP

SCALE	SHEET	OF
2-1	1	1

4 3 2 1

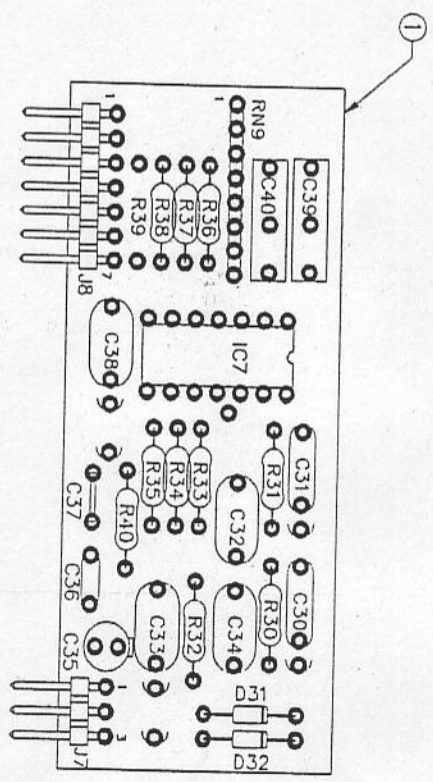


NOTE:  
 1. ALL RESISTION VALUES IN OHMS  
 2. ALL CAPACITANCE VALUES IN UF UNLESS OTHERWISE SPECIFIED  
 3. ICN ICN - LK339 ICN - WE834

VELDYNE ACCOUNTS
LABOR ON JOB SHEET 11 10/78 M.D.-18
COMPANION BOARD
NO. 128 COMP
DATE: FEBRUARY 10 1981 WORK
01



- QC NOTES:
1. R39 IS NOT USED
  2. USE A 22 AWG BUSS WIRE JUMPER IN PLACE OF C37 AS NOTED IN THE BOM
  3. ALL COMPONENT LEADS MUST SHOW THROUGH SOLDER SIDE OF BOARD
  4. ALL COMPONENT LEADS MUST BE TRIMMED TO 1/16" MAX
  5. ALL COMPONENT LEADS MUST SHOW GOOD SOLDER FLOW ON BOTH SIDES OF BOARD. NO SOLDER VOIDS/PINHOLES
  6. SOLDER MUST BE SMOOTH AND SHINY WITH EVEN WETTING
  7. BOTH SIDES OF BOARD MUST BE CLEAN



COMP SIDE

DWG. NO.		SHT. 1		1	
REVISIONS					
DATE	REV.	DESCRIPTION	DATE	APPROVED	

SEE SEPARATE BOM

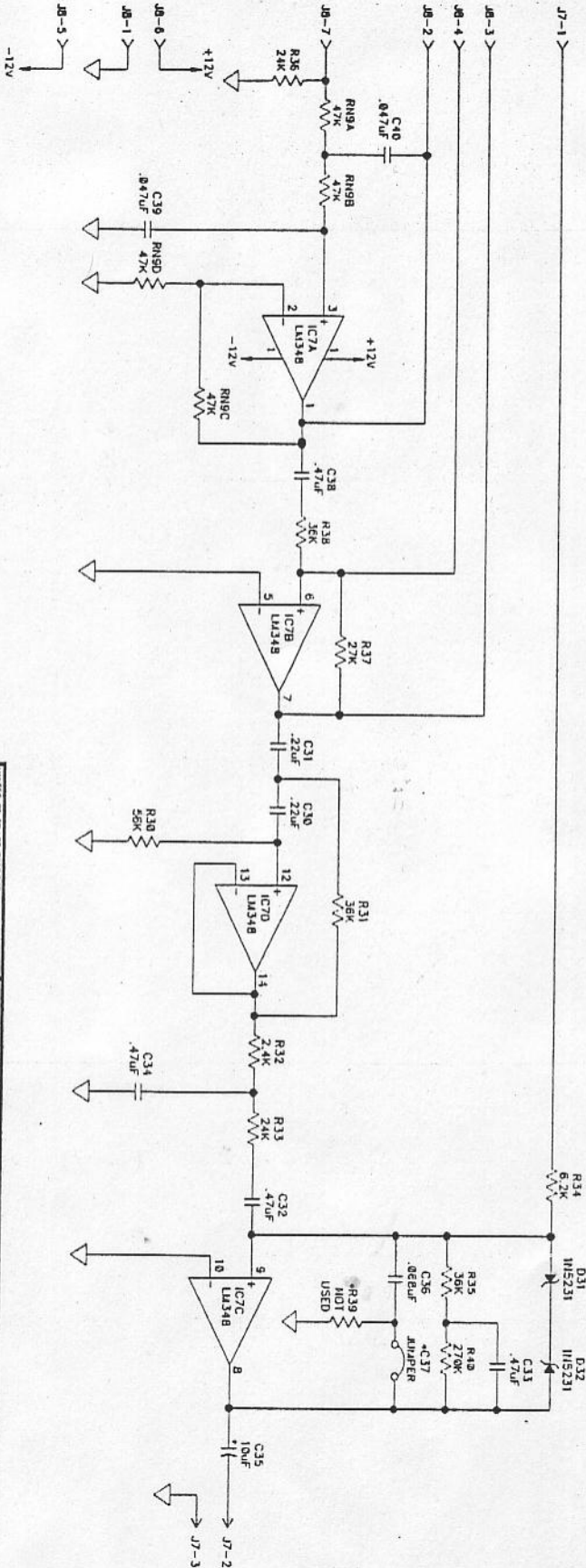
APPLICATION	USED ON
NEXT ASSY	

MATERIAL		QUANTITY	
FRAMES	DECIMALS	ANGLES	
	XXX .01		

DATE		12-31-92	
DRAWN		MV	
CHECKED			
DESIGNED			

Velocityne Acoustics Inc.	
ASSY. PCB, LOOP, ULD 12 & FOUNDATION 10, 12 & 15	
SCALE 2:1	DWG. NO. QC84-12BLOOP
	SHEET 1 OF 1

- NOTES: UNLESS OTHERWISE SPECIFIED,  
 1. ALL RESISTOR VALUES ARE IN OHMS AND ARE 1/4W, 5%.  
 2. R39 IS NOT USED AND IS LEFT EMPTY ON THE PCB ASSEMBLY.  
 3. C37 IS NOT USED BUT IS REPLACED WITH A JUMPER ON THE PCB ASSEMBLY.



LAST USED TABLE					
FIRST USED	R30	RN9	C30	D31	IC7
LAST USED	R30	RN9	C40	D32	IC7
NOT USED	R39		C37		J8

DWG. NO.		REV.		DESCRIPTION		DATE		APPROVAL	
S11		A		INITIAL RELEASE		1-13-92			

UNLESS OTHERWISE SPECIFIED, THE FOLLOWING DIMENSIONS ARE IN INCHES. DIMENSIONS ARE IN MILLIMETERS UNLESS OTHERWISE SPECIFIED.

PARTS NO.	QTY	DESCRIPTION	REV.
X001	1	INITIAL	

DATE: 1-13-93

APPROVALS: MV

DESIGNED BY: [ ]

CHECKED BY: [ ]

DATE: [ ]

SCALE: N/A

SIZE: B

DMG. TID: SM-0009

REV. A

DO NOT SCALE DRAWING

APPLICATION: USED ON: [ ]

HEAT ASSY: [ ]

Velocityne Acoustics Inc.

SCHEMATIC, PCB, LOOP BOARD

SCALE N/A

DMG. TID: SM-0009

REV. A

SHEET 1 OF 1



4

3

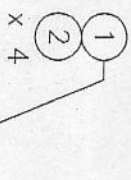
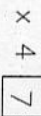
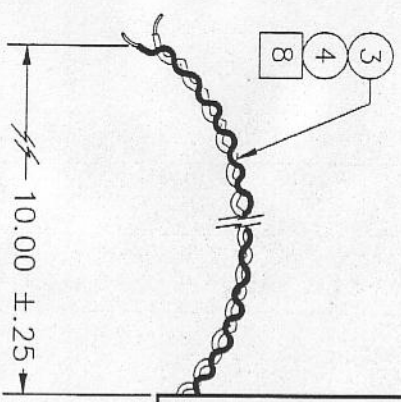
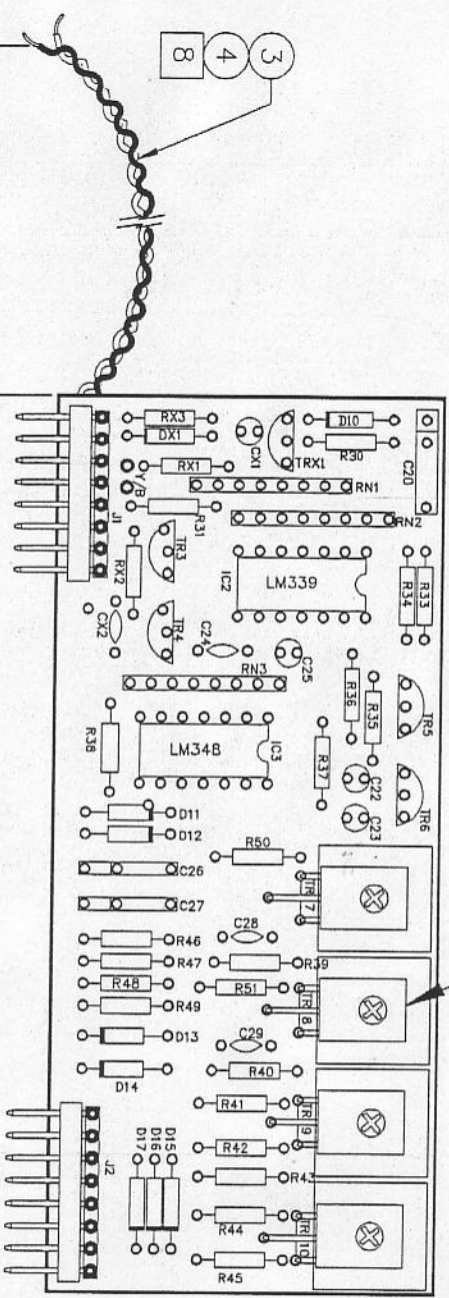
1

E.C.N. REV.		DESCRIPTION		DATE	APPROVED
A		RELEASE FOR PRODUCTION		3-9-94	<i>[Signature]</i>

REVISIONS

DWG. NO. 84-155 SH. 1

- NOTES: UNLESS OTHERWISE SPECIFIED
1. ALL COMPONENT LEADS MUST SHOW THROUGH SOLDER SIDE OF BOARD
  2. ALL COMPONENT LEADS MUST BE TRIMMED TO .063 INCH (1.58mm) MAX
  3. ALL COMPONENT LEADS MUST SHOW GOOD SOLDER FLOW ON BOTH SIDES OF BOARD. NO SOLDER VOIDS/PINHOLES
  4. SOLDER MUST BE SMOOTH AND SHINY WITH EVEN WETTING NO COLD SOLDER JOINTS
  5. BOTH SIDES OF BOARD MUST BE CLEAN
  6. FOR ITEM NUMBERS SEE COMPUTER BILL OF MATERIALS
  7. PARTS TO BE FLUSH WITH PCB
  8. TWIST ITEMS 3 & 4 TWO TWISTS PER INCH
  9. WIRE ENDS TO BE STRIPPED AND TINNED .25±.10 INCH (6.35mm±0.13)



SEE SEPARATE PARTS LIST

APPLICATION	USED ON
	ULD
	NEXT ASSY

DIMENSIONS ARE IN INCHES  
TOLERANCES ARE:  
FRACTIONS DECIMALS ANGLES  
± 1/16 .XXX ± .01 ± 1°  
MATERIAL: SEE NOTE 1  
FINISH: .XXX ± .005

APPROVALS	DATE
<i>[Signature]</i>	3-9-94
<i>[Signature]</i>	4/12/94
<i>[Signature]</i>	4/12/94

**Velocityne Acoustics Inc.**  
ASSY ULD-15/18  
PREAMP BABY BOARD  
DWG. NO. 84-155  
SHEET 1 OF 1

DO NOT SCALE DRAWING

ENGINEER	DATE
<i>[Signature]</i>	4/12/94

REV.	DATE	BY
A		

A

B

C

D

A

B

C

D

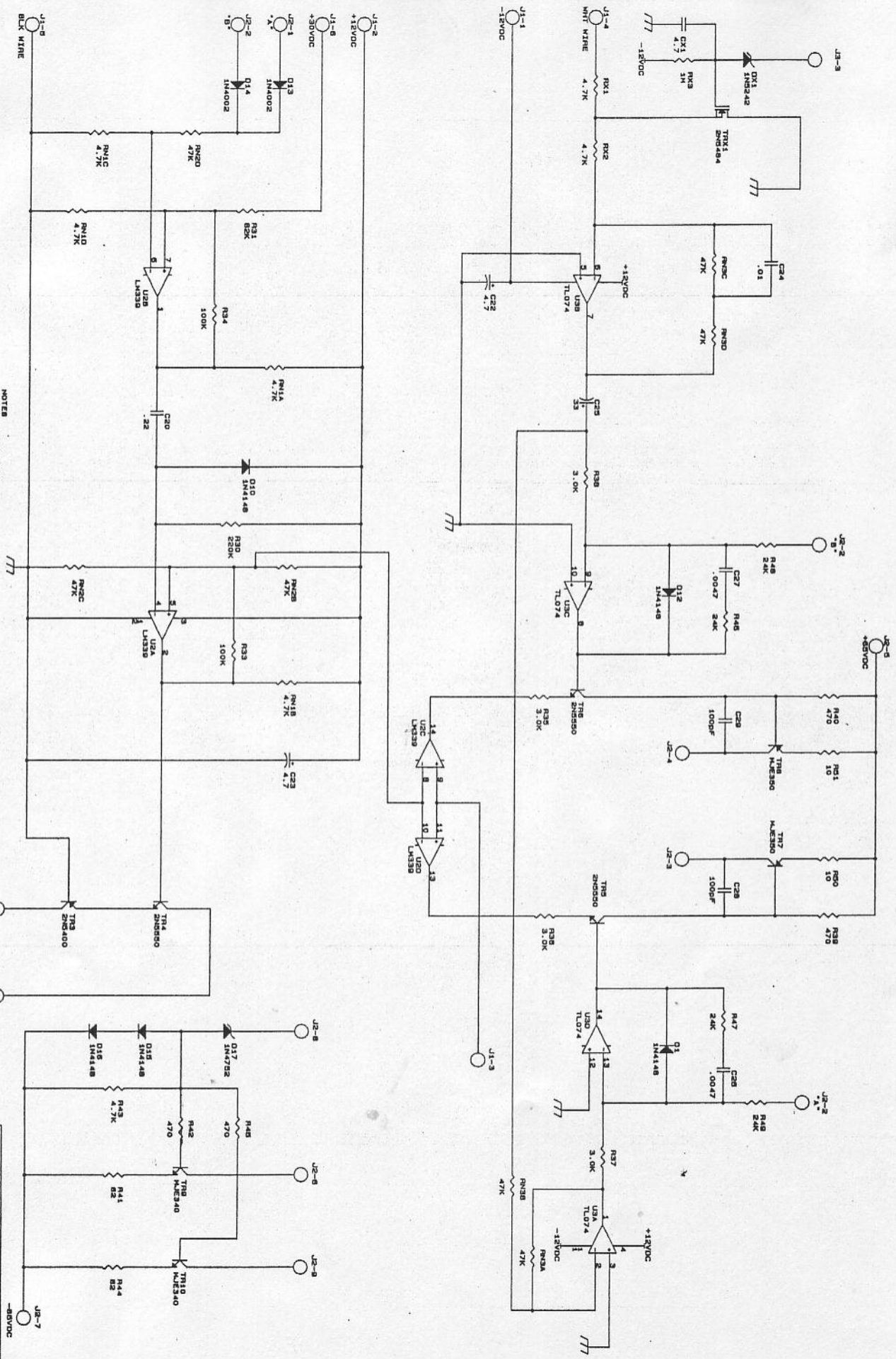
4

3

2

1

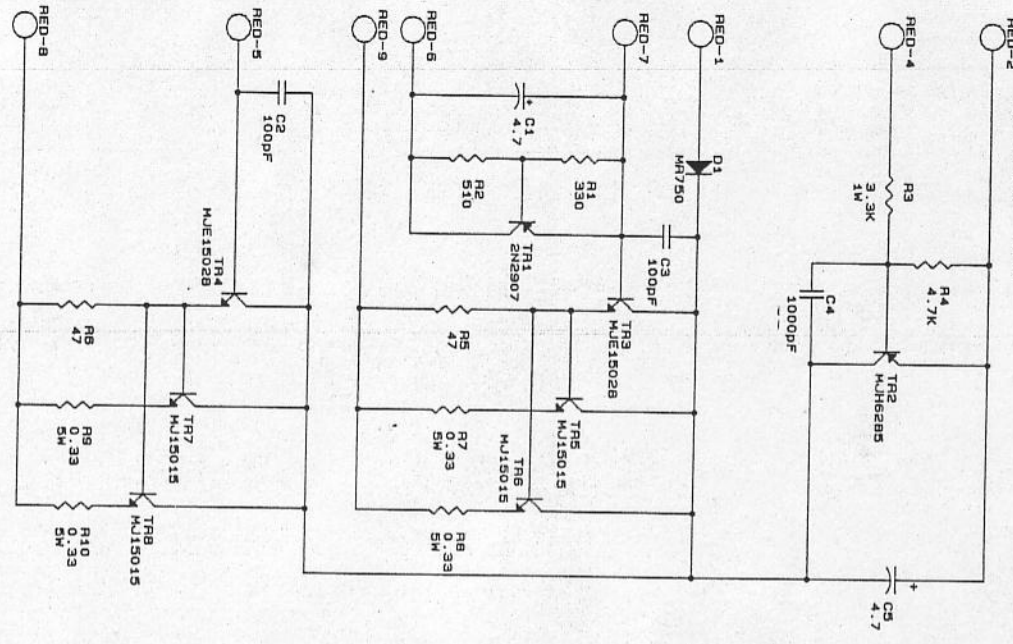




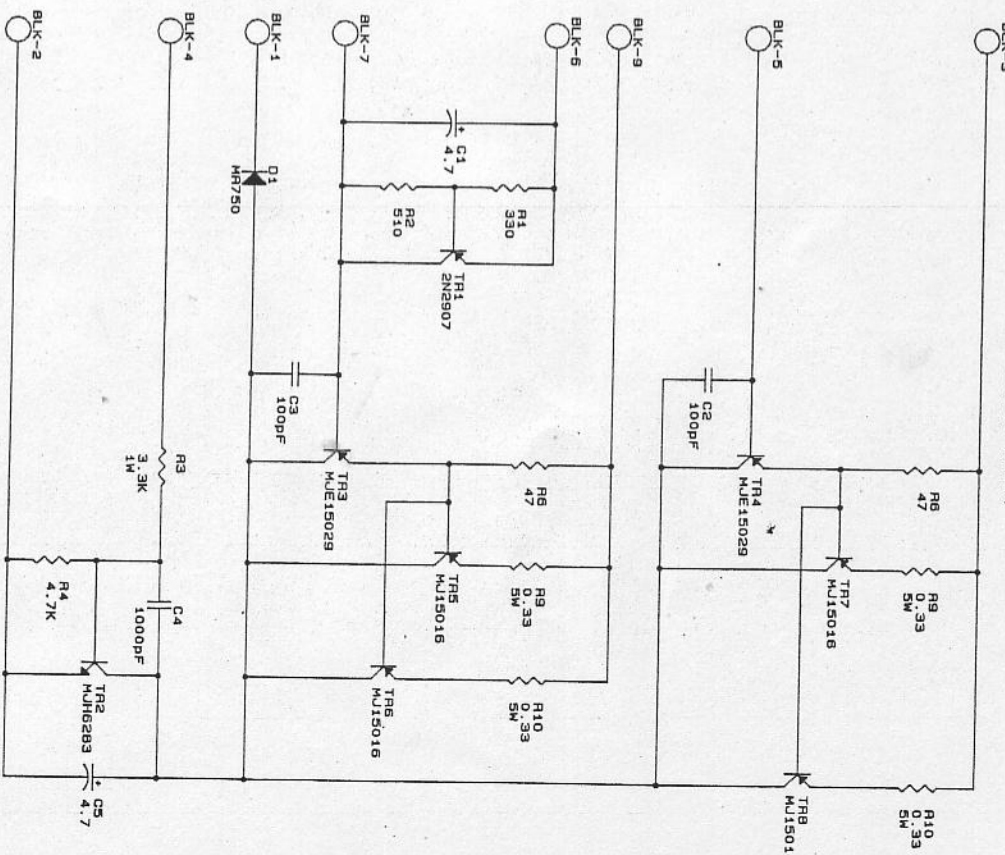
- NOTES
1. U1 - TL074
  2. U2 - TL074
  3. ALL CAP VALUES IN  $\mu$ F UNLESS NOTED
  4. ALL RES. VALUES IN OHMS

VELDYNE ACQUATICS  
 LIBRD ON L&D SERIES JL 16/18  
 JWP BOARD  
 Site/Document Number: 00-102  
 REV  
 DATE: FABRUARY 10, 1991 SHEET 1 OF 1

OUTPUT POSITIVE BOARD  
P/N 55-151A (RED)



OUTPUT NEGATIVE BOARD  
P/N 55-151B (BLACK)

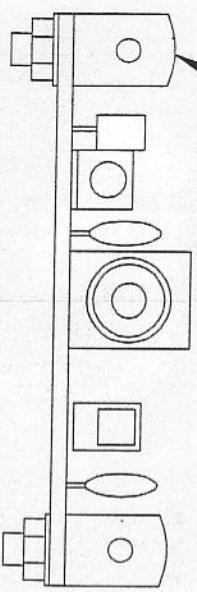
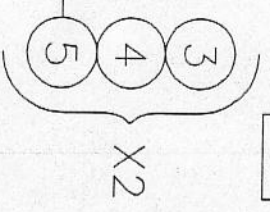
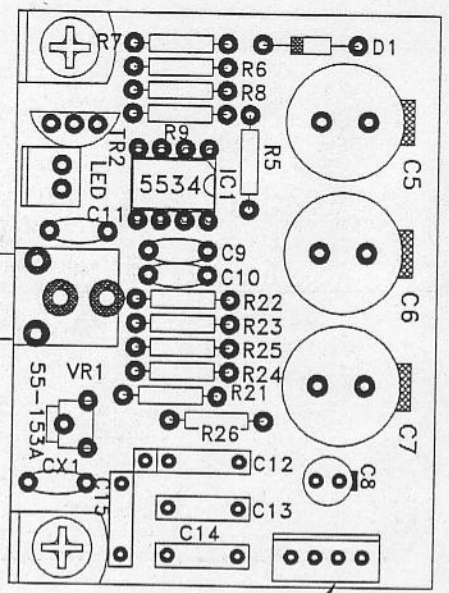


- NOTES: UNLESS OTHERWISE SPECIFIED  
 1. ALL CAP VALUES IN UF  
 2. ALL RES. VALUES IN OHMS

VELDYNE ACOUSTICS	
USED ON ULD SERIES II 15/18	
OUTPUT BOARDS	
Title	REV
Size Document Number 55-151	
Date: February 16, 1971	8 of



DWG. NO.		SH.	REVISIONS	
E.C.N./REV.	DESCRIPTION	DATE	APPROVED	
A	RELEASE	4/11/94	<i>[Signature]</i>	



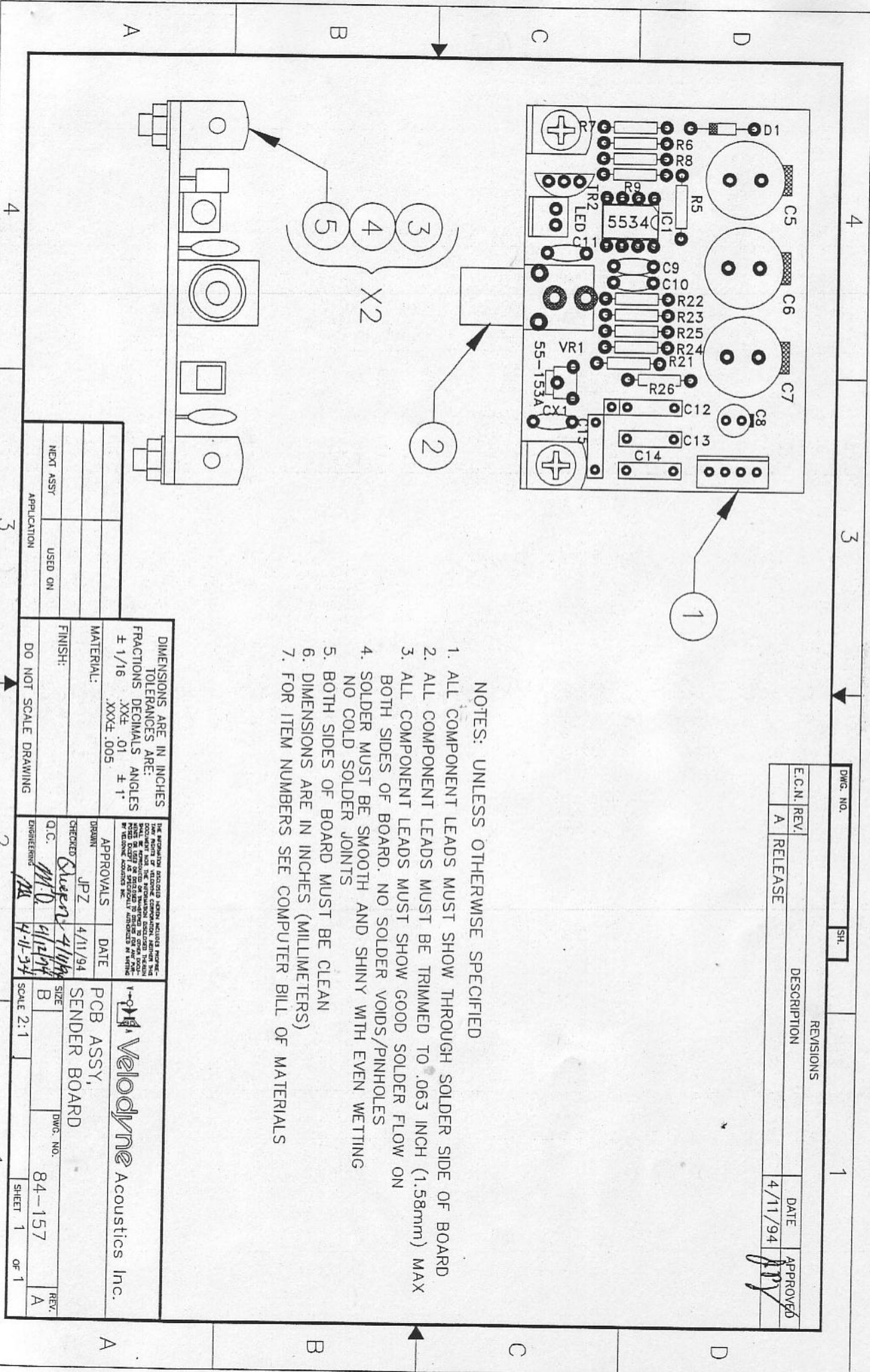
- NOTES: UNLESS OTHERWISE SPECIFIED
1. ALL COMPONENT LEADS MUST SHOW THROUGH SOLDER SIDE OF BOARD
  2. ALL COMPONENT LEADS MUST BE TRIMMED TO .063 INCH (1.58mm) MAX
  3. ALL COMPONENT LEADS MUST SHOW GOOD SOLDER FLOW ON BOTH SIDES OF BOARD. NO SOLDER VOIDS/PINHOLE
  4. SOLDER MUST BE SMOOTH AND SHINY WITH EVEN WETTING NO COLD SOLDER JOINTS
  5. BOTH SIDES OF BOARD MUST BE CLEAN
  6. DIMENSIONS ARE IN INCHES (MILLIMETERS)
  7. FOR ITEM NUMBERS SEE COMPUTER BILL OF MATERIALS

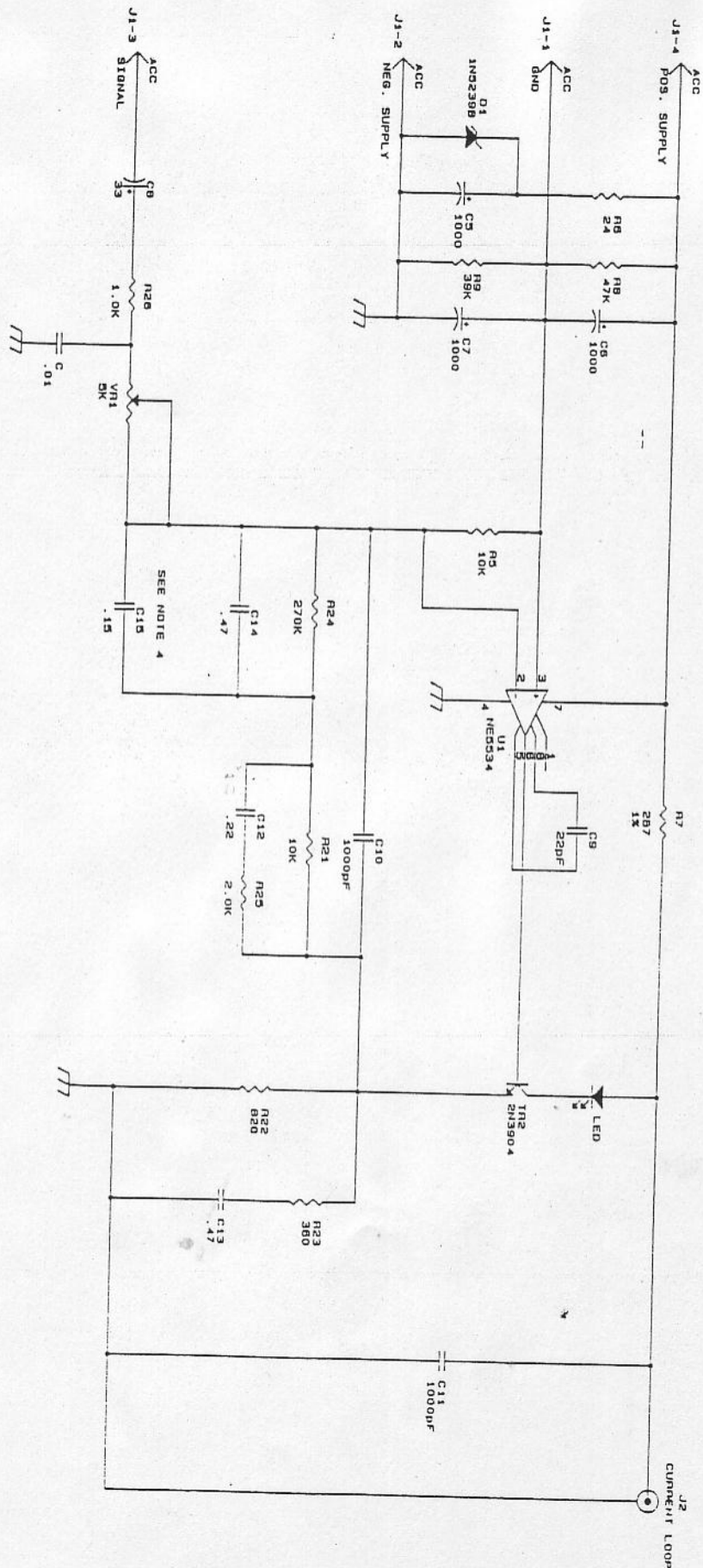
DIMENSIONS ARE IN INCHES  
 TOLERANCES ARE:  
 FRACTIONS DECIMALS ANGLES  
 $\pm 1/16$  .XXX ± 1°  
 MATERIAL: .XXX ± .005  
 FINISH:

APPROVALS	DATE
JPZ	4/11/94
CHECKED	
Q.C.	
ENGINEERING	

Velocityne Acoustics Inc.  
 PCB ASSY,  
 SENDER BOARD  
 DWG. NO. 84-157  
 SCALE 2:1

DO NOT SCALE DRAWING
NEXT ASSTY
USED ON
APPLICATION

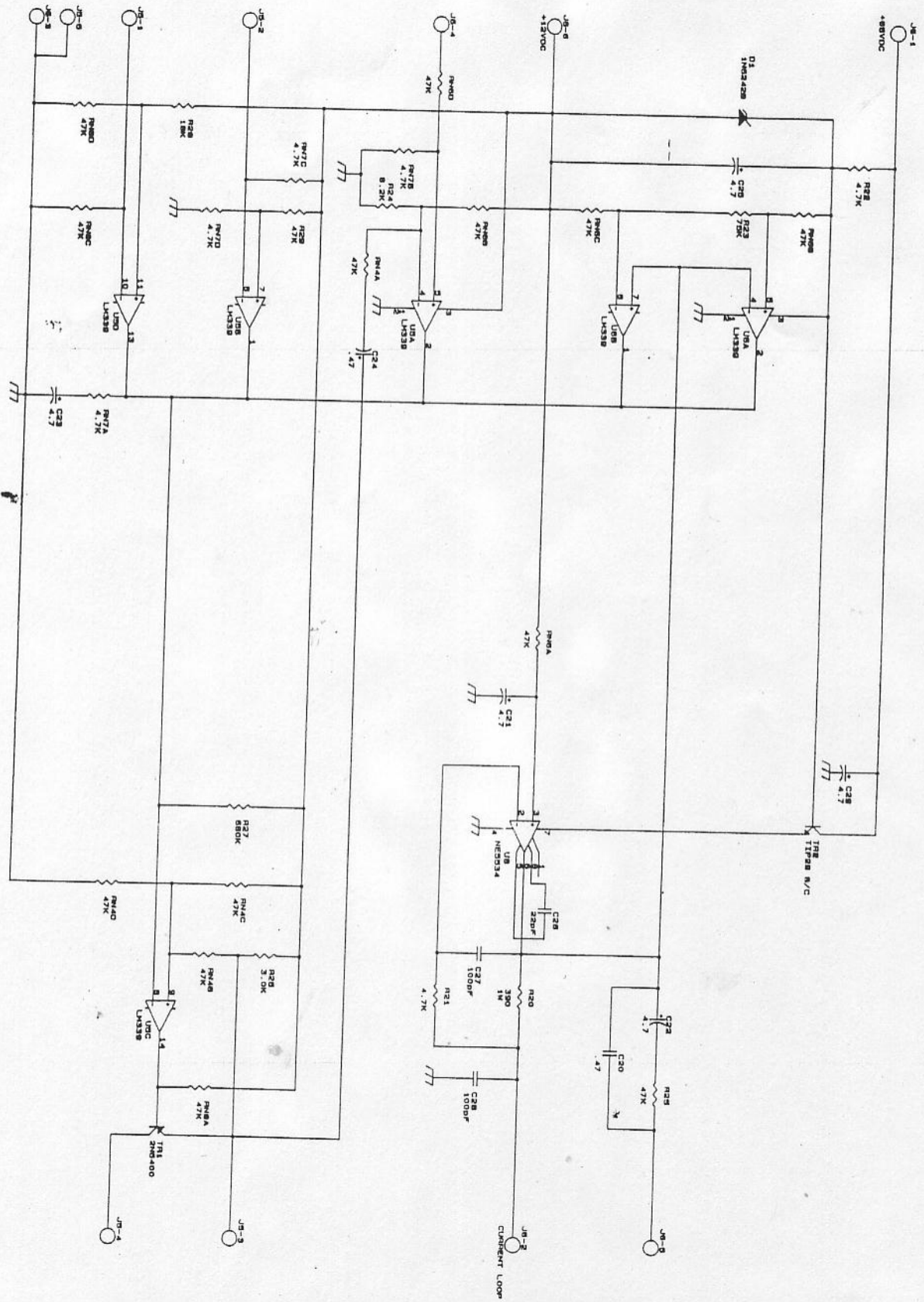




- NOTES:
1. C10 NOT USED ON WLD 15
  2. U1 NEEDS
  3. ALL CAP VALUES IN UF UNLESS NOTED
  4. ALL RESISTOR VALUES IN OHMS

FILE#	VELOCITY ACQUISITION
SIZE DOCUMENT NUMBER	USED ON WLD SERIES 11 12/78
D	SENDER BOARD
DATE: FEBRUARY 10, 1981 SHEET	85-104
	REV





NOTE: ALL RESISTOR VALUES IN OHMS  
 1. ALL CAPACITOR VALUES IN PICO FARADS UNLESS OTHERWISE SPECIFIED  
 2. ICM, ICS - LM339 ICS - NE5034

VELOCITY-ACOUSTICS	
USED ON LMA SERIES II LMA/II LMA-18	
DATE	1 JANUARY 1971
BY	...
CHKD	...
APPV	...
REV	...
NO	...
QTY	...
UNIT	...
PRICE	...
TOTAL	...